

00/1-09-008-29W1/0
TD: 1011 m (TV)
Riser: 1000 m
FABRICONE SNOLAR PRO/ 14-4-29 (WPM)
7263 dm to next well

00/1-14-007-29W1/0
TD: 1036 m (TV)
Riser: 1000 m
FABRICONE SNOLAR PRO/ 14-4-29 (WPM)
856 dm to next well

00/04-14-007-29W1/0
TD: 1040 m (TV)
Riser: 1000 m
FABRICONE SNOLAR PRO/ 14-4-29 (WPM)
924 dm to next well

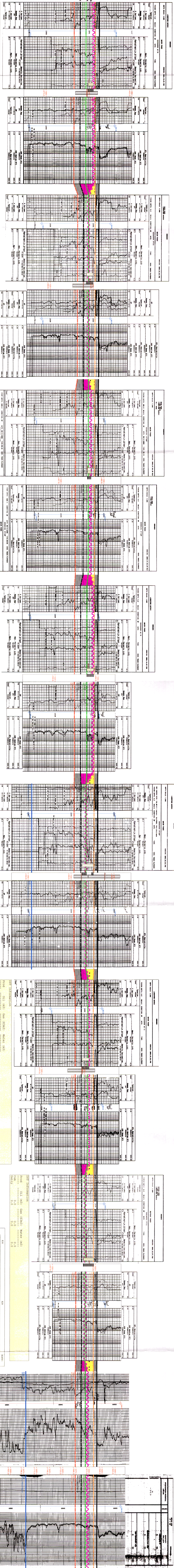
00/14-11-007-29W1/0
TD: 1040 m (TV)
Riser: 1000 m
FABRICONE SNOLAR PRO/ 14-4-29 (WPM)
914 dm to next well

00/06-11-007-29W1/0
TD: 1032 m (TV)
Riser: 1000 m
FABRICONE SNOLAR PRO/ 14-4-29 (WPM)
951 dm to next well

00/13-12-007-29W1/0
TD: 1025 m (TV)
Riser: 1000 m
FABRICONE SNOLAR PRO/ 14-4-29 (WPM)
3922 dm to next well

00/14-34-006-29W1/0
TD: 1046 m (TV)
Riser: 1000 m
FABRICONE SNOLAR PRO/ 14-4-29 (WPM)
733 dm to next well

00/16-34-006-29W1/0
TD: 1046 m (TV)
Riser: 1000 m
FABRICONE SNOLAR PRO/ 14-4-29 (WPM)
733 dm to next well



00/1-09-008-29W1/0
Prod: 0.1 (m³) Gas (m³) Water (m³)
Cum: 7210.6 0.0 398.8
Daily: 5.1 0.0 9.7

00/1-14-007-29W1/0
Prod: 0.1 (m³) Gas (m³) Water (m³)
Cum: 7557 0.0 320.1
Daily: 0.8 0.0 1.1

00/04-14-007-29W1/0
Prod: 0.1 (m³) Gas (m³) Water (m³)
Cum: 1431.1 0.0 148.5
Daily: 1.6 0.0 1.6

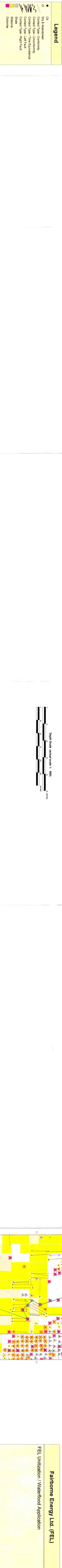
00/14-11-007-29W1/0
Prod: 0.1 (m³) Gas (m³) Water (m³)
Cum: 2931.2 0.0 118.5
Daily: 2.0 0.0 0.8

00/06-11-007-29W1/0
Prod: 0.1 (m³) Gas (m³) Water (m³)
Cum: 444.6 0.0 150.7
Daily: 0.8 0.0 1.4

00/13-12-007-29W1/0
Prod: 0.1 (m³) Gas (m³) Water (m³)
Cum: 442.3 0.0 135.6
Daily: 0.4 0.0 1.2

00/14-34-006-29W1/0
Prod: 0.1 (m³) Gas (m³) Water (m³)
Cum: 444.6 0.0 150.7
Daily: 0.8 0.0 1.4

00/16-34-006-29W1/0
Prod: 0.1 (m³) Gas (m³) Water (m³)
Cum: 444.6 0.0 150.7
Daily: 0.8 0.0 1.4



Legend

- Oil & Gas Reservoir
- Contact Type - Conformity
- Contact Type - Unconformity
- Contact Type - Time Equivalence
- Contact Type - Fault
- Contact Type - Right Fall
- Shale
- Siltstone
- Dolomite

Depth Scale (actual scale 1: 800)

Produced by: Fairborne Energy Ltd. (FEL)
Version: 1.0
Date: 12/12/2014
Copyright: 2004, FEL

Author: Fairborne Energy Ltd. (FEL)
Project: FEL Utilization / Waterflood Application
Date: 12/12/2014
Fairborne Energy Ltd. (FEL)